

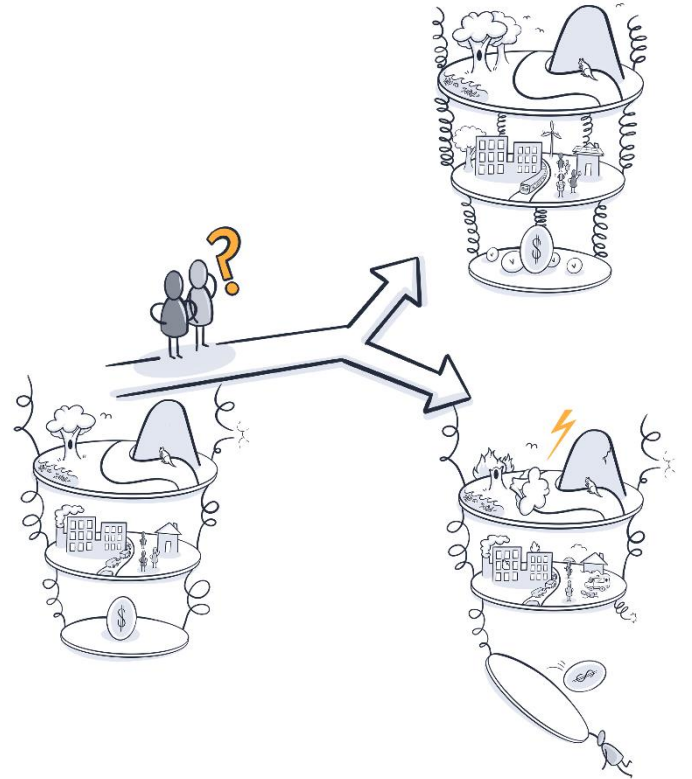


What have we learned about Australia's vulnerability?

DRSI Special Event – Compound, Cascading and Lingering disasters

Nicky Grigg (presenting work from teams of colleagues and partners) | 11 November 2020

Australia's National Science Agency





Acknowledgments

Resilience insights, narratives and checklist for Queensland

Funders: Queensland Reconstruction Authority, CSIRO

Authors: Deborah O'Connell, Nicky Grigg, Dayna Hayman, Erin Bohensky, Tom Measham, Russell Wise, Yiheyis Maru, Michael Dunlop, Sarah Patterson, Sneha Vaidya, Rachel Williams, Steven Lade

Australian Vulnerability Profile

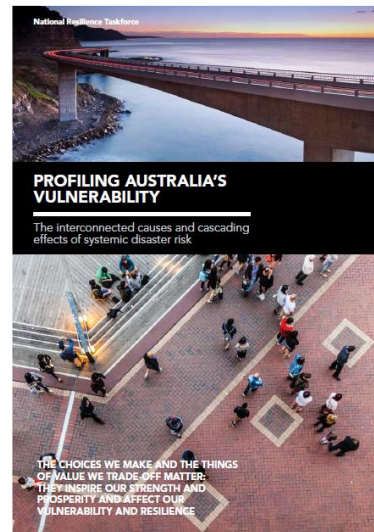
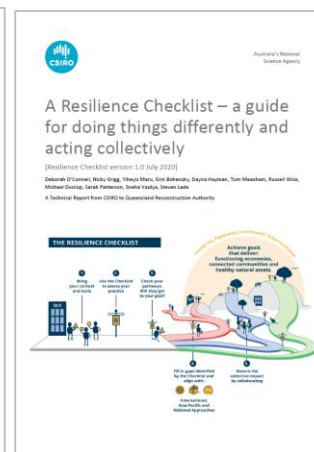
Funders: Emergency Management Australia/National Resilience Taskforce, CSIRO

Authors: Deborah O'Connell, Russell Wise, Rachel Williams, Nicky Grigg, Seona Meharg, Mike Dunlop, Veronica Doerr, Jacqui Meyers, Jill Edwards, Monica Osuchowski, Mark Crossweller

Agencies: EMA, CSIRO, Geoscience Australia, BoM, DoEE, Dept of Defence, several state agencies from Western Australia, South Australia, Queensland

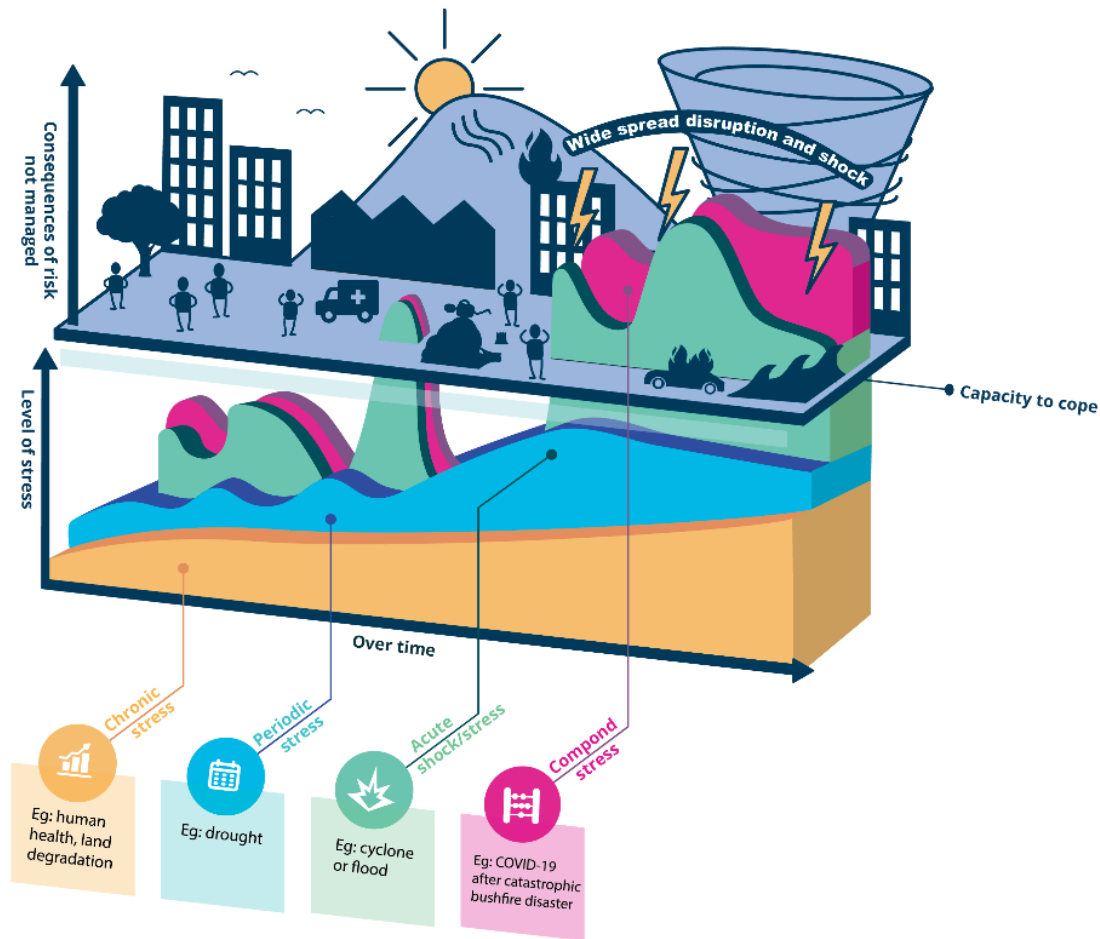
<https://knowledge.aidr.org.au/resources/profiling-australias-vulnerability/>

Artwork: ThinkPlace, <https://www.thinkplace.com.au/>

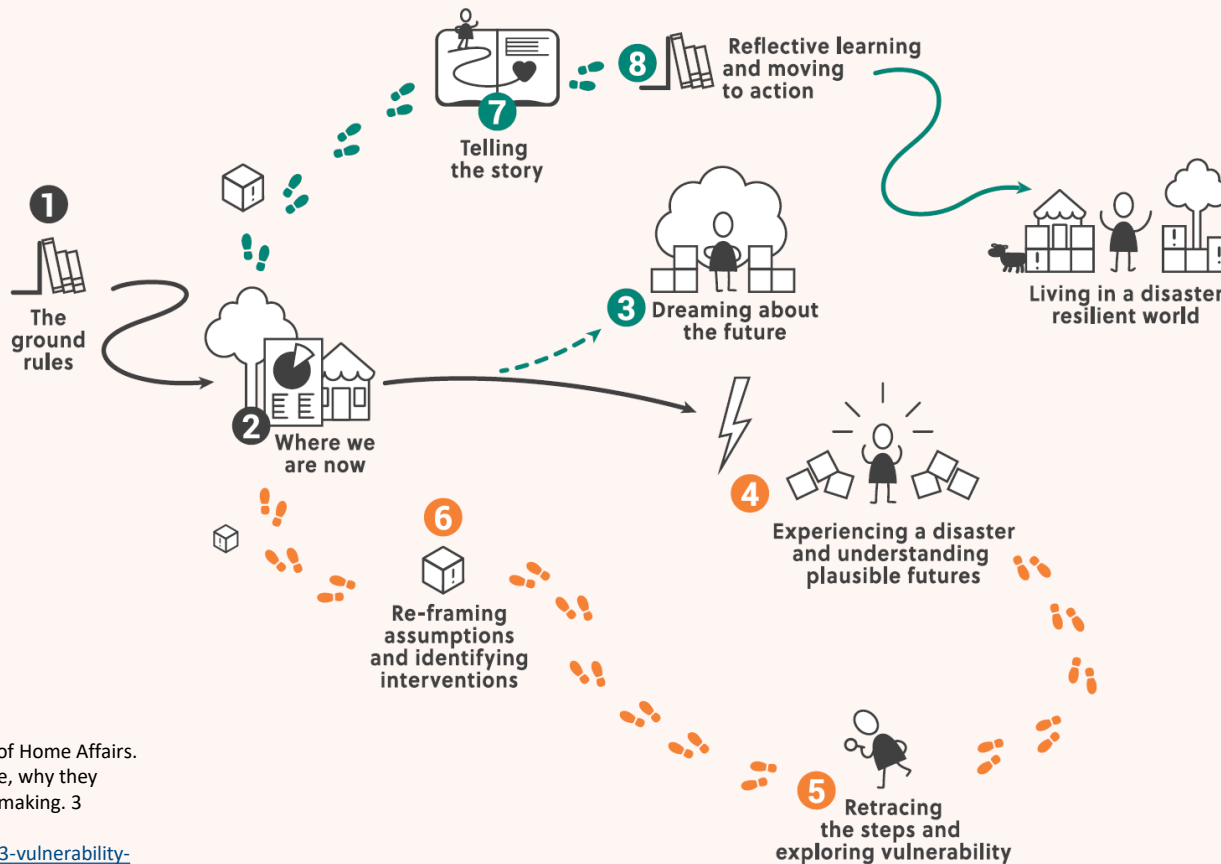


System view

What makes Australia vulnerable to disaster when severe to catastrophic events impact what people and society value?



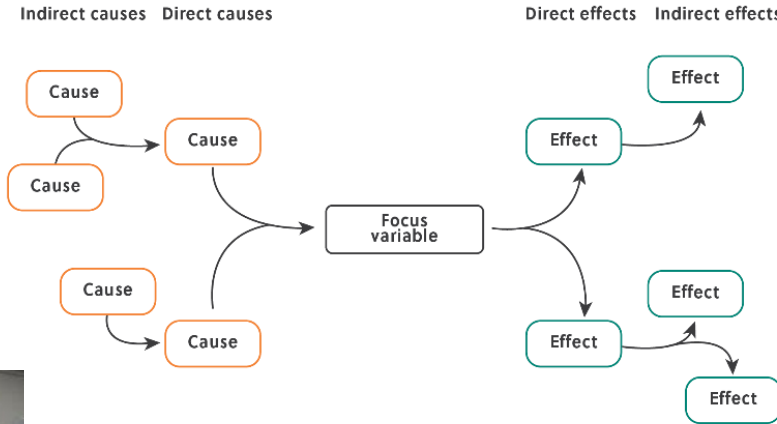
Deconstructing disaster workshops



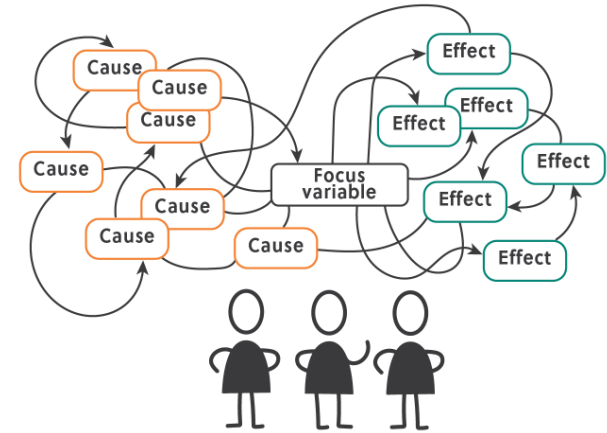
Source: Australian Government, Department of Home Affairs.
 2019. Climate and Disaster Risk: What they are, why they matter and how to consider them in decision making. 3 Guidance on Vulnerability
<https://knowledge.aidr.org.au/media/7710/03-vulnerability-guidance-strategic-decisions-climate-disaster-risk-2020.pdf>

Qualitative system descriptions

CAUSE-EFFECT DIAGRAMS



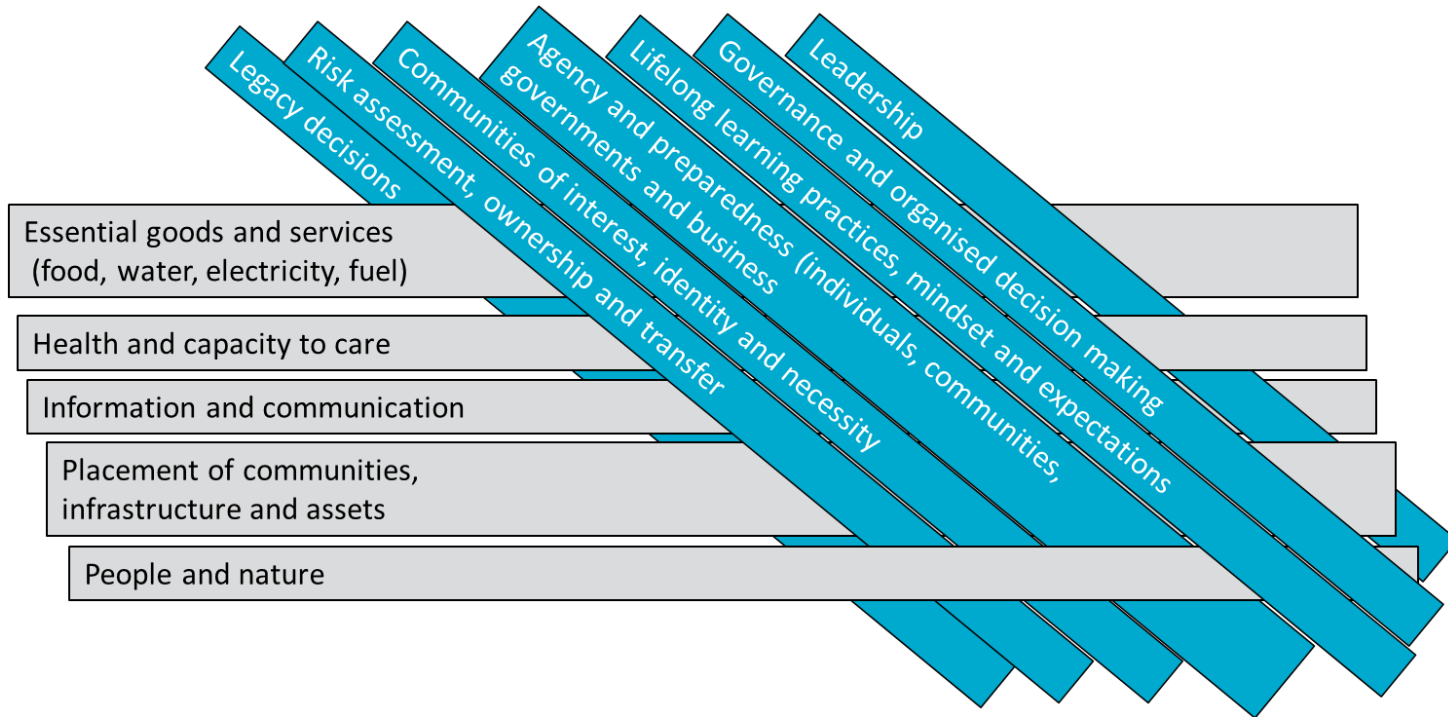
CAUSE AND EFFECT MAPPING





Typical system patterns

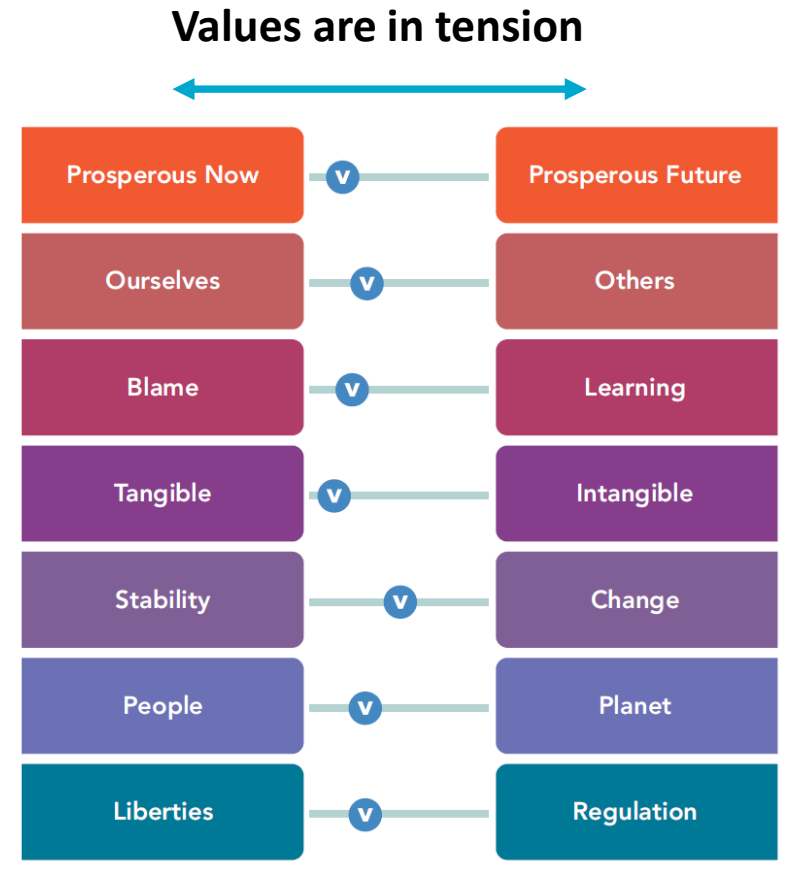
Provisioning
systems

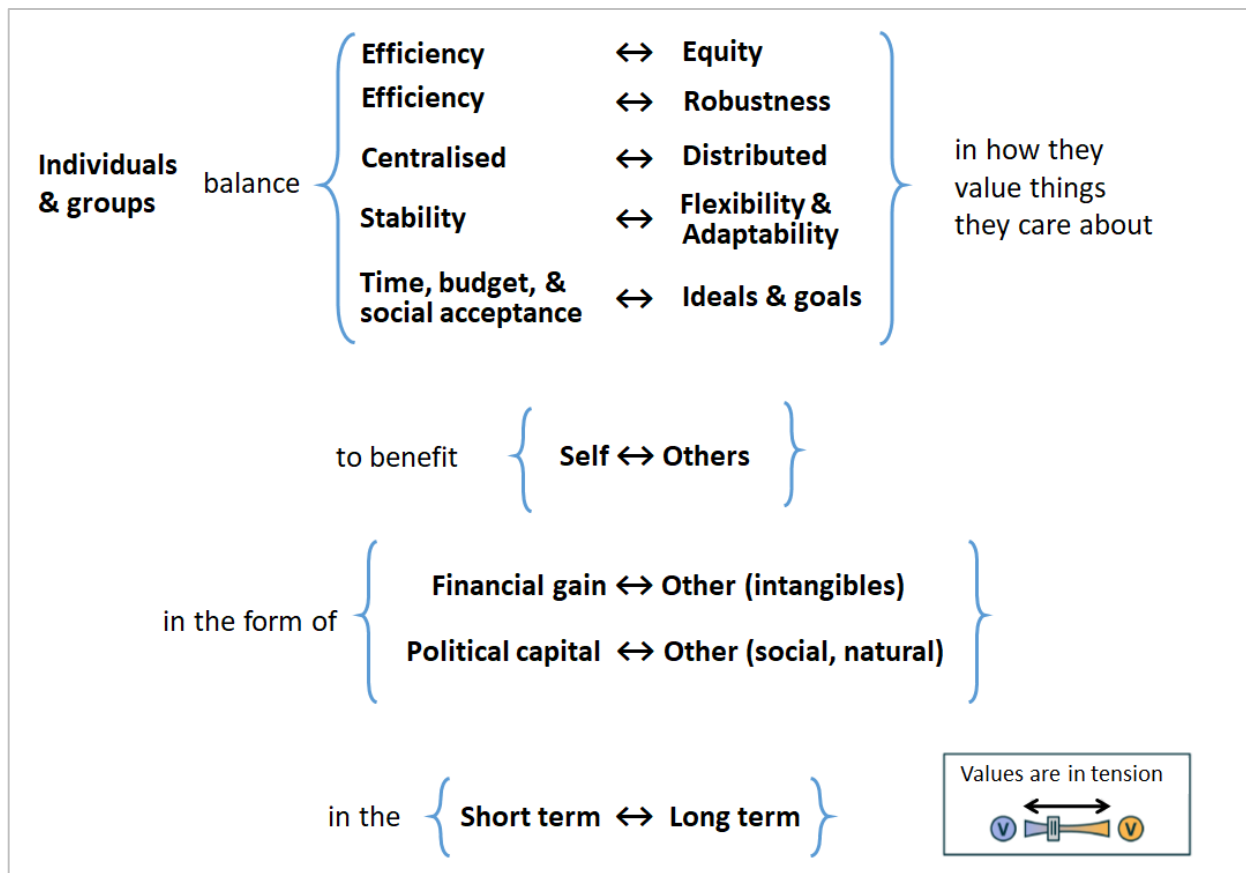


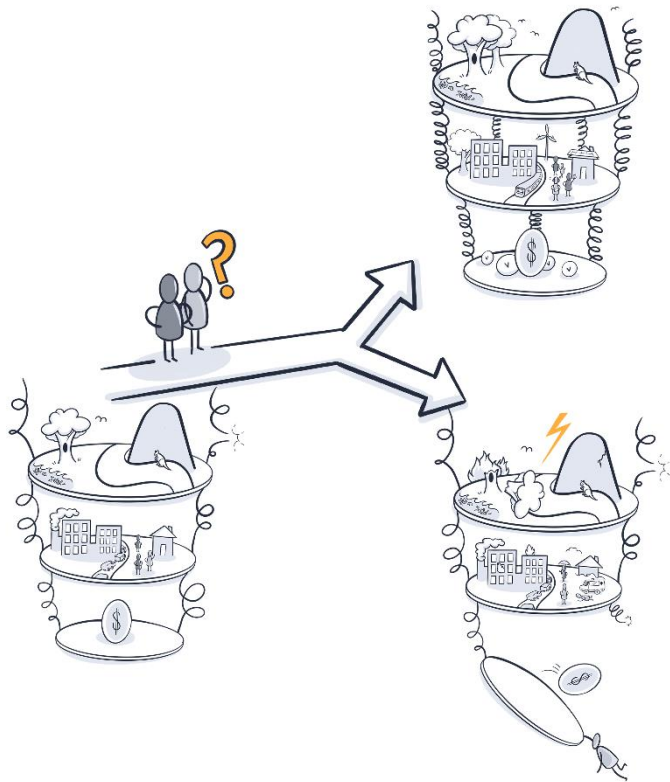
Behaviours, social
capacities and social
processes

Values tensions

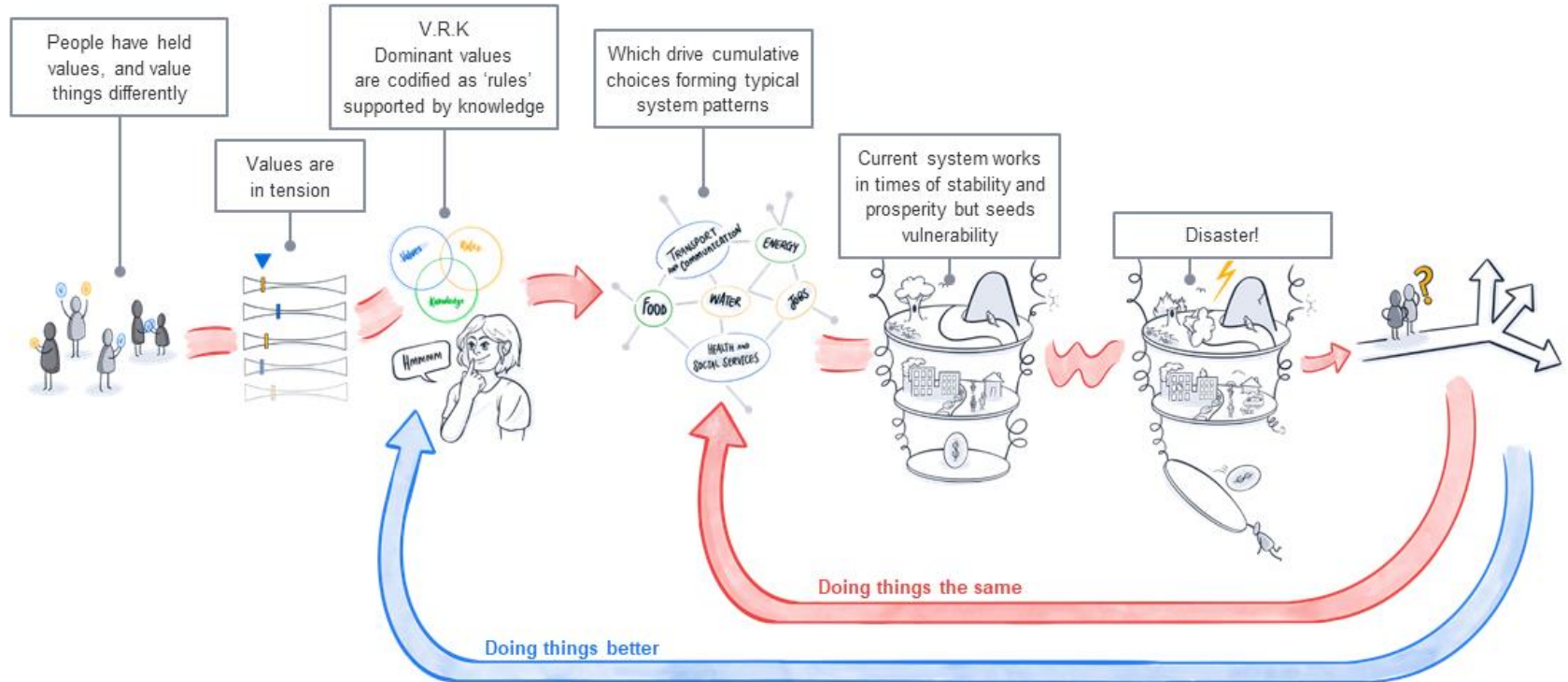
Values prioritised in decision-making during “normal times” create systems that may not serve the values that matter to us most in times of catastrophe





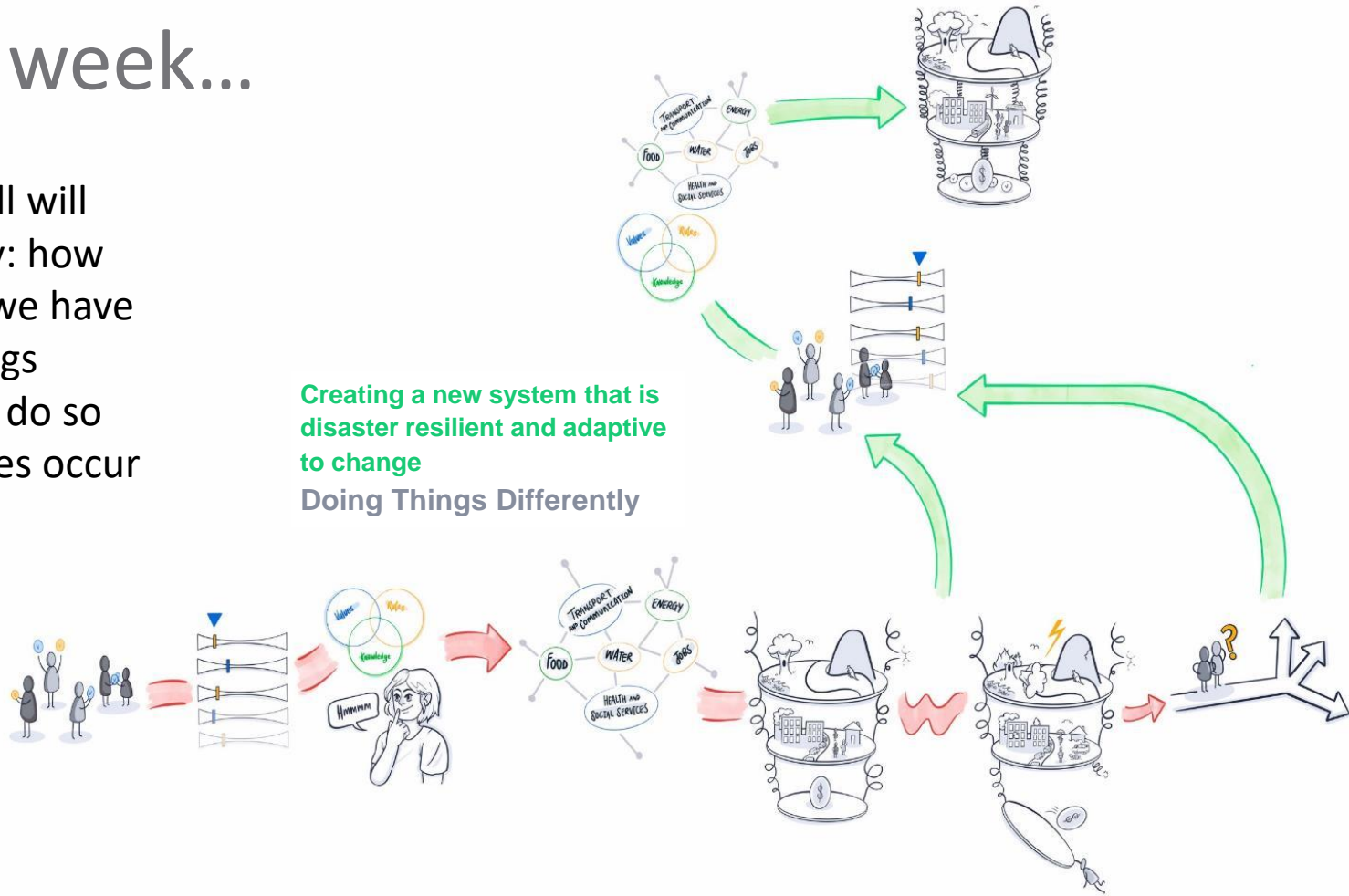


Tone Bjordam's installation at the Resilience 2017 conference in Stockholm
<http://www.tonebjordam.com/>



Next week...

Deborah O'Connell will continue the story: how can we use what we have learned to do things differently, and to do so *before* catastrophes occur



Key messages

- ‘Deconstructing disaster’ workshops were an effective vehicle for:
 - providing rich, qualitative data about system vulnerability
 - sharing perspectives that sow the seeds of new narratives
- People value things differently in stable times and in the face of disaster
- Vulnerability to disaster is created by the choices, decisions and trade-offs made in times of relative stability
- Decisions that create vulnerability – and the trade-offs they embody – are made at multiple levels in the system, making it harder for individuals to reduce their vulnerability
- Some groups in society have disproportionate power to increase or reduce vulnerability to disaster, while others are disproportionately vulnerable



Thank you

CSIRO Land & Water

Dr Nicky Grigg

Senior Research Scientist

+61 2 6246 5569

nicky.grigg@csiro.au

CSIRO Land & Water

Dr Deborah O'Connell

Principal Research Scientist

+61 2 6246 4548

deborah.o'connell@csiro.au